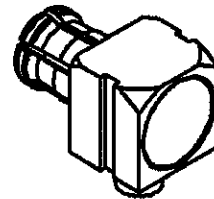
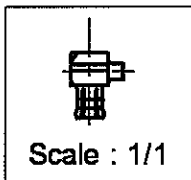
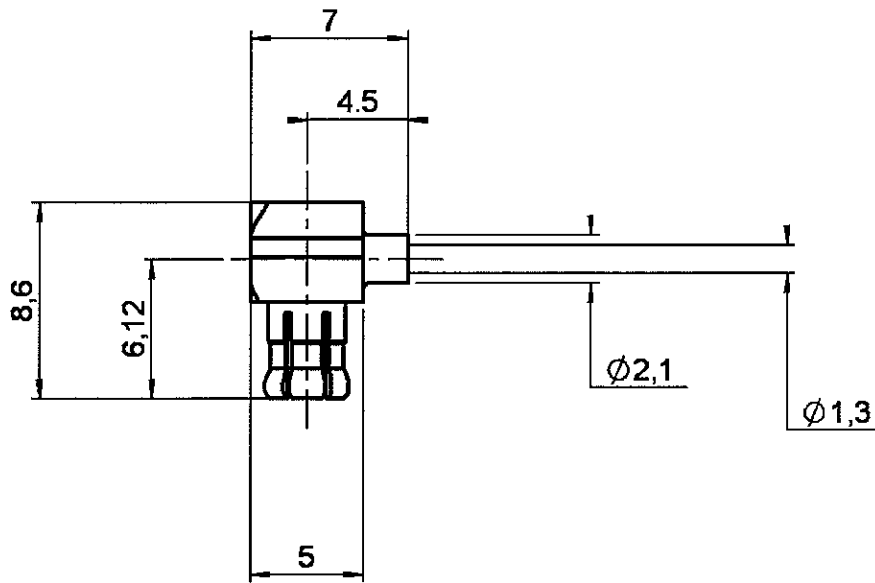


**RIGHT ANGLE PLUG SOLDER TYPE**

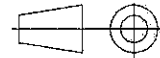
**R113.151.020**

**CABLE .047**

Series : MCX



All dimensions are in mm.



COMPONENTS	MATERIALS	PLATINGS (µm)
BODY	BRASS	BBR 2
CENTER CONTACT	BRASS	GOLD 1.3 OVER NICKEL 2
OUTER CONTACT	BERYLLIUM COPPER	BBR 2
INSULATOR	PTFE	
GASKET	-	
OTHERS PARTS	BRASS	BBR 2
-	-	-
-	-	-

Issue : 0516 F

In the effort to improve our products, we reserve the right to make changes judged to be necessary.



**RIGHT ANGLE PLUG SOLDER TYPE**

**R113.151.020**

**CABLE .047**

Series : MCX

**PACKAGING**

Standard	Unit	Other
1	-	Contact us

**SPECIFICATION**

**ELECTRICAL CHARACTERISTICS**

Impedance		<b>50</b> Ω
Frequency		<b>0-6</b> GHz
VSWR	<b>1.63</b> +	<b>0.000</b> x F(GHz) Maxi
Insertion loss		<b>0.5</b> √F(GHz) dB Maxi
RF leakage	- (	<b>NA</b> - F(GHz)) dB Maxi
Voltage rating		<b>175</b> Veff Maxi
Dielectric withstanding voltage		<b>500</b> Veff mini
Insulation resistance		<b>1000</b> MΩ mini

**CABLE ASSEMBLY**

Stripping	a	b	c	d	e	f
mm	3.20	2.20	0.00	0.00	0.00	0.00

Assembly instruction :

Recommended cable(s)  
UT47 M17/151-00001

Cable retention

- pull off **43** N mini
- torque **NA** N.cm

**MECHANICAL CHARACTERISTICS**

Center contact retention		
Axial force – Mating end	<b>10</b>	N mini
Axial force – Opposite end	<b>10</b>	N mini
Torque	<b>NA</b>	N.cm mini
Recommended torque		
Mating	<b>NA</b>	N.cm
Panel nut	<b>NA</b>	N.cm
Clamp nut	<b>NA</b>	N.cm
A/F clamp nut	<b>0.000</b>	mm

**TOOLING**

Part Number	Description	Hexagon
.	.	.
R282.740.020	SOLDERING MOUNTING	
R282.864.010	POSITIONER	
R282.868.000	EXTRACTION ASSEMBLY TOOL	

Mating life	<b>500</b>	Cycles mini
Weight	<b>0.796</b>	g

**OTHERS CHARACTERISTICS**

**ENVIRONMENTAL**

Operating temperature	<b>-55/+115</b>	° C
Hermetic seal	<b>NA</b>	Atm.cm3/s
Panel leakage	<b>NA</b>	

Issue : 0516 F

In the effort to improve our products, we reserve the right to make changes judged to be necessary.



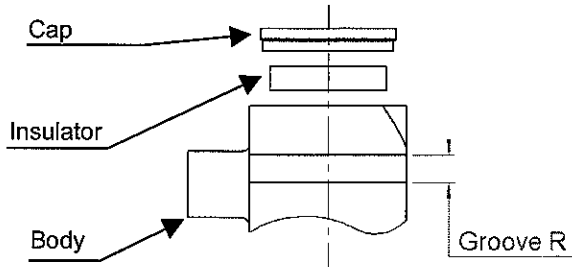
**RIGHT ANGLE PLUG SOLDER TYPE**

**R113.151.020**

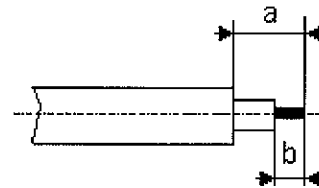
**CABLE .047**

Series : MCX

**COMPONENTS**



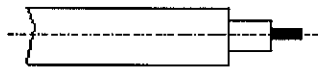
**STRIPPING DIMENSIONS**



We recommend a thermal preconditioning cable

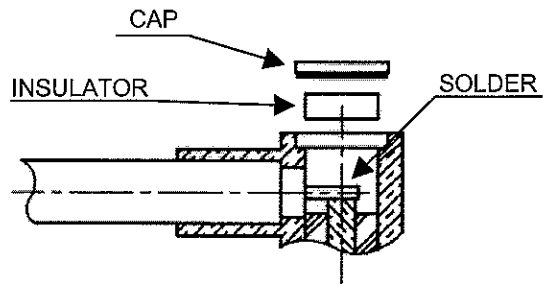
**1**

Strip the cable.  
To clean the cable.  
To tin cable inner conductor.



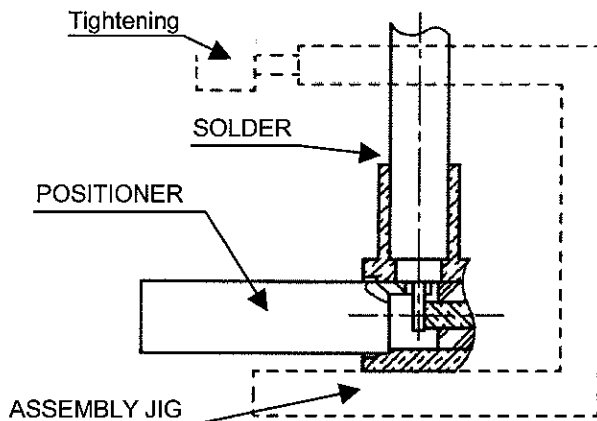
**3**

To solder cable inner conductor into the centre contact.  
To clean soldering area.  
Introduce the insulator into the body.  
Press fit the cap.



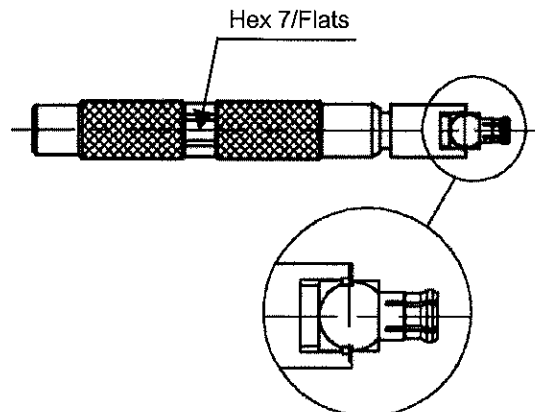
**2**

Introduce the positioner (R282.864.010) and the cable into the connector body until contact with the body shoulder, place the sub assembly into the assembly jig (R282.740.020) and tighten it. Solder body on the cable and let assembly cool down before removing it from the jig. To clean soldering area.



**4**

Slide mounting tool R282.868 onto the body grooves.  
Press fit the cap turning tool handle with adapted wrench 7 mm (cap in the same plan than square face).



Issue : 0516 F

In the effort to improve our products, we reserve the right to make changes judged to be necessary.

